

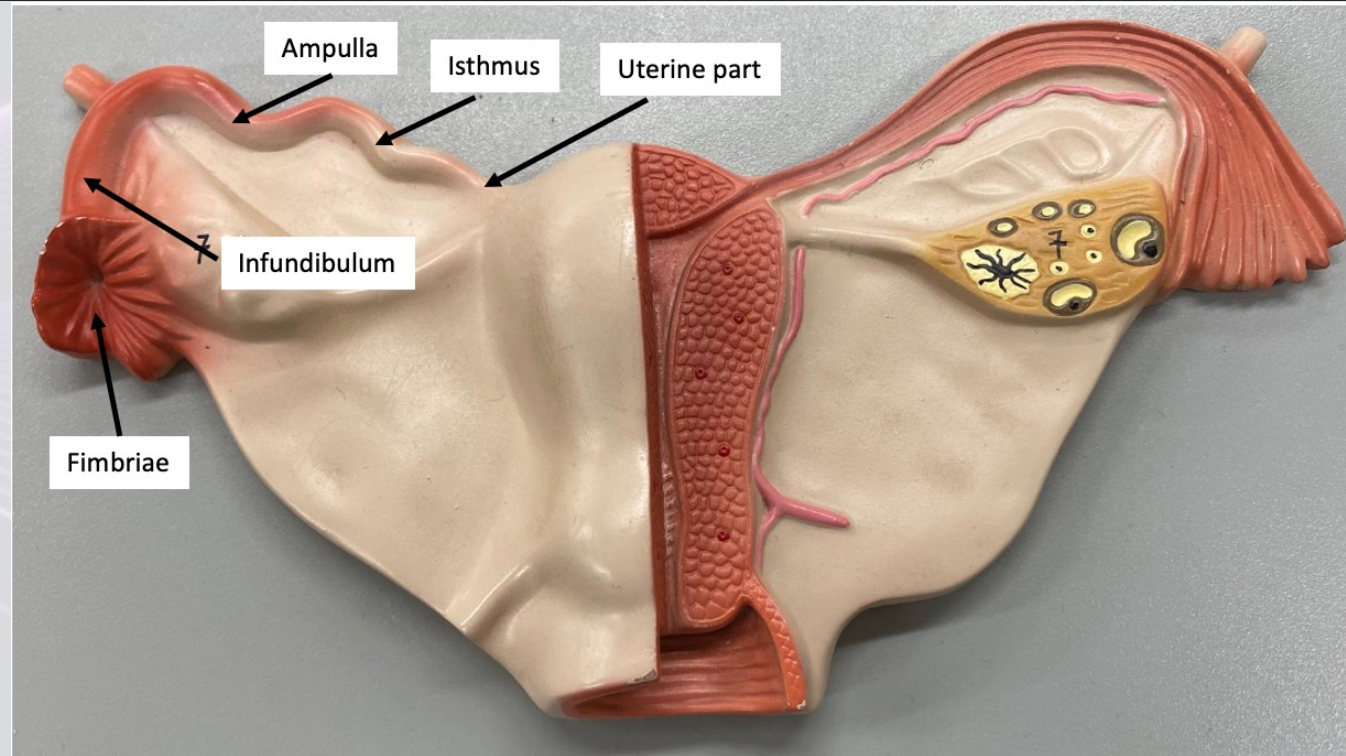
Female Reproductive System: Uterus

Dr. Lisa Brinn
lbrinn@fiu.edu



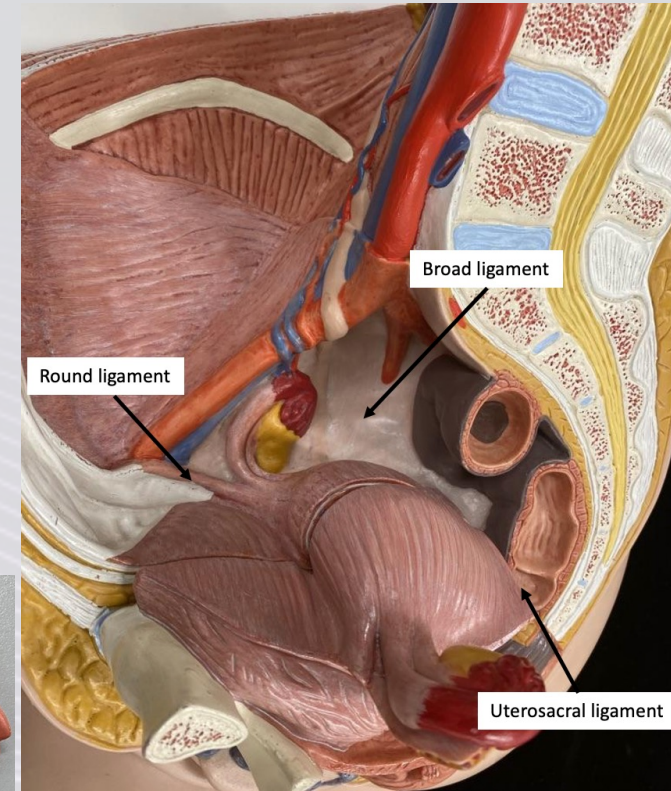
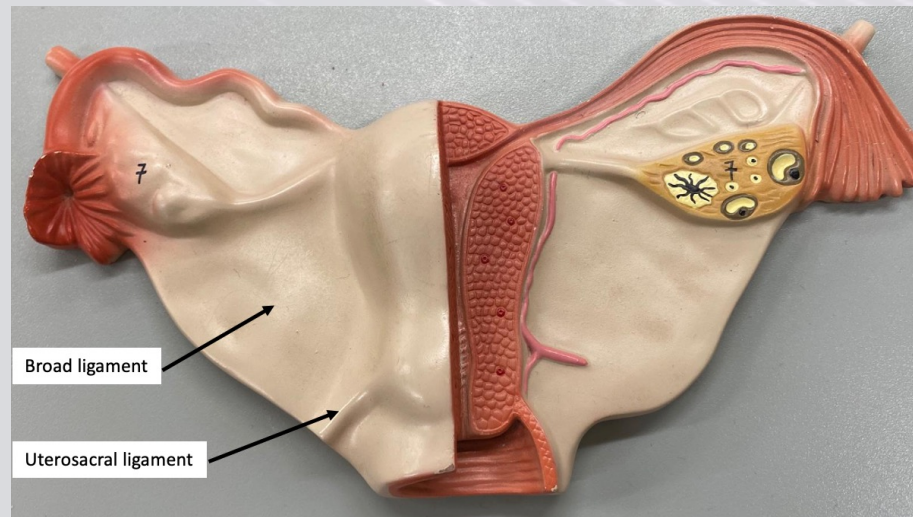
Uterine Tubes

- Also known as Fallopian tubes
- Regions:
 1. Fimbriae
 2. Infundibulum
 3. Ampulla
 4. Isthmus
 5. Uterine part



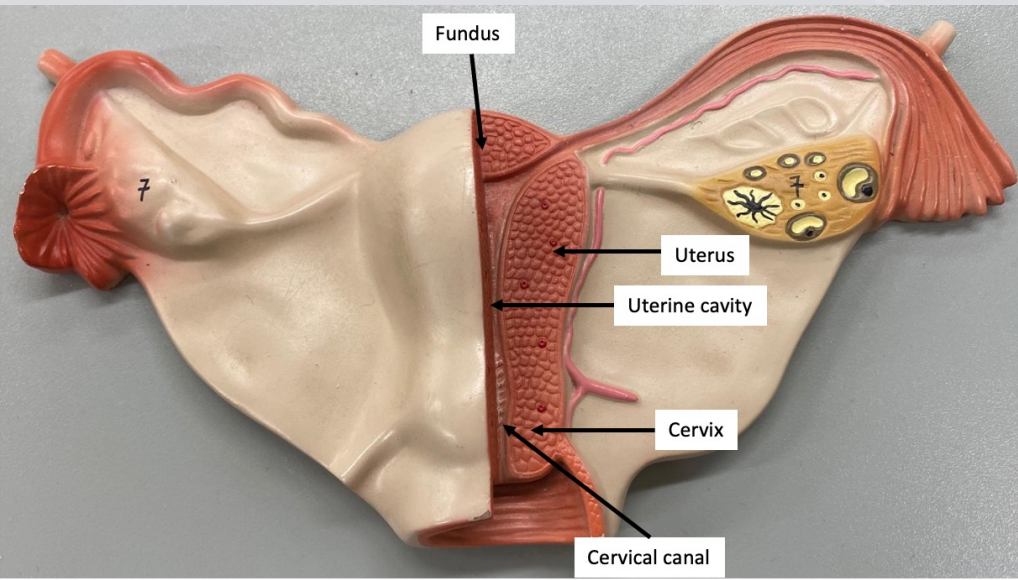
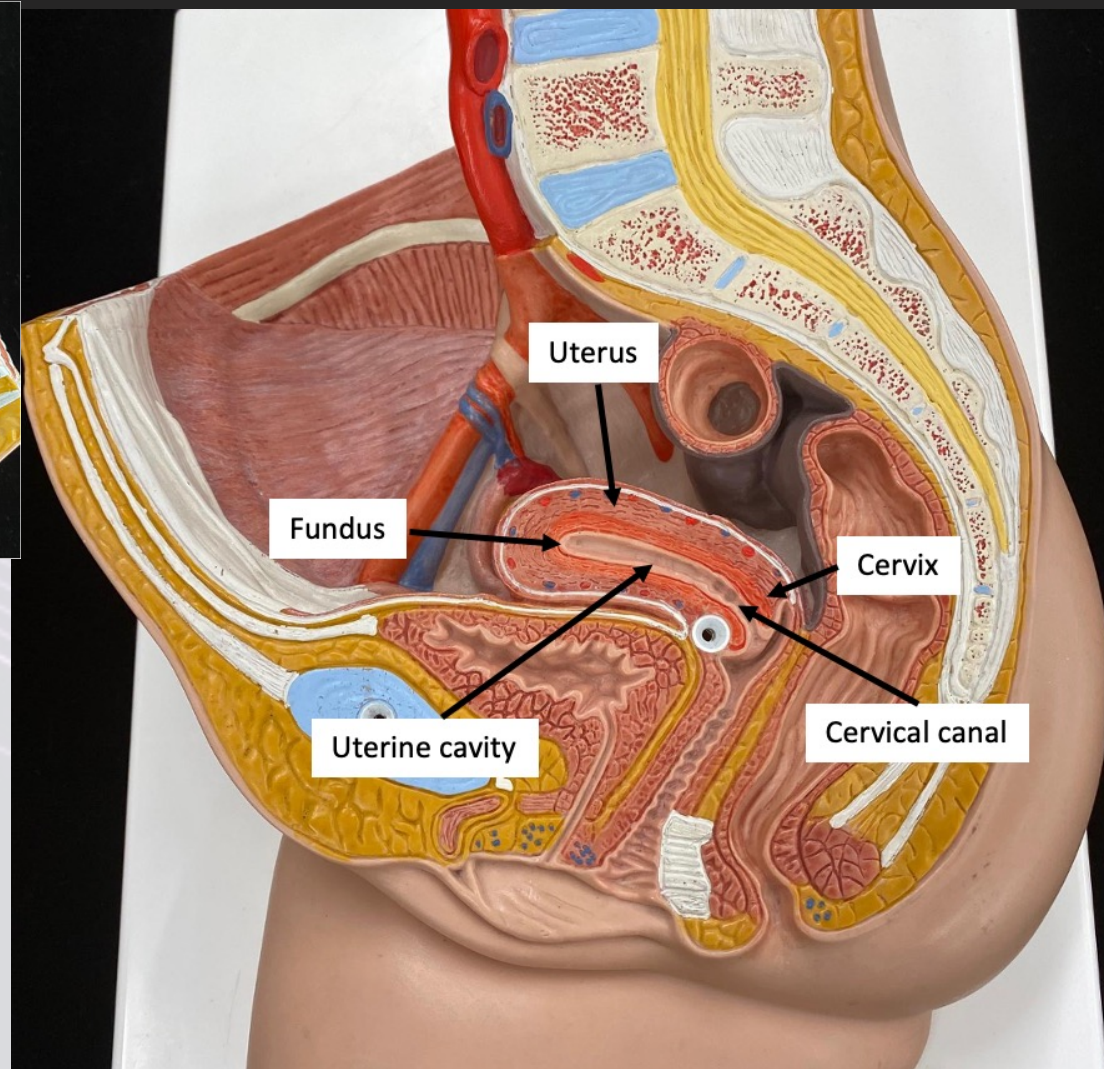
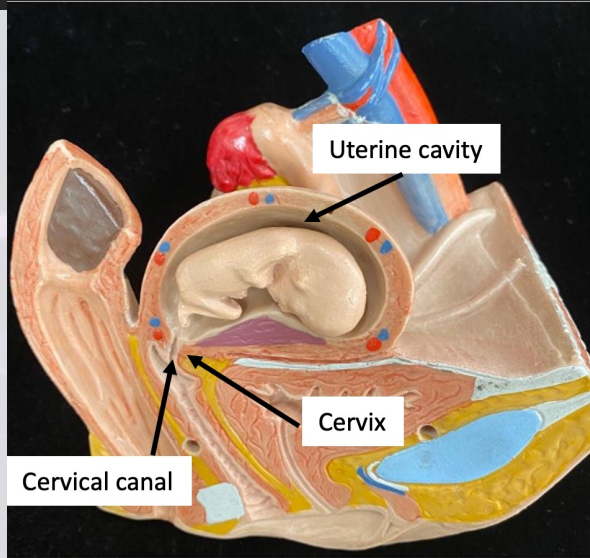
Uterus

- Functions:
 - ❖ Physical protection
 - ❖ Nutritional support
 - ❖ Waste removal
- Ligaments
 - ❖ Broad ligament
 - ❖ Uterosacral ligament
 - ❖ Round ligament



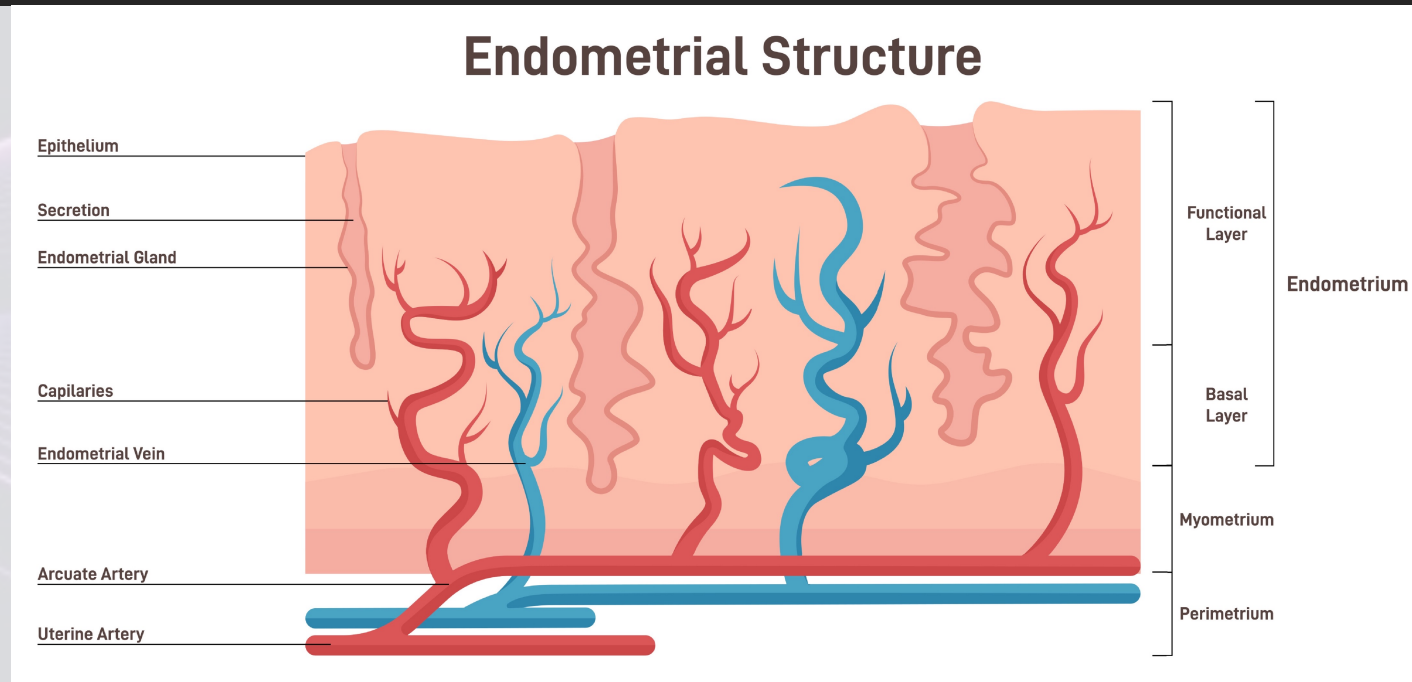
Gross Anatomy of Uterus

- Uterus
 - ❖ Fundus
 - ❖ Uterine cavity
 - ❖ Cervix
 - Cervical canal



Uterine Wall

- Endometrium
 - ❖ Inner layer
 - ❖ Subdivided:
 - Functional layer
 - Basal layer
- Myometrium
 - ❖ Outer layer
 - ❖ Thickest portion of uterine wall
- Perimetrium
 - ❖ Serous layer
 - Secretes lubricating fluid



Uterine Cycle

1. Menstrual phase
 - ❖ Degeneration of functional layer
2. Proliferative phase
 - ❖ Restoration of uterine epithelium
3. Secretory phase
 - ❖ Begins after ovulation
 - ❖ Lasts until corpus luteum stays intact

